

APPENDIX G

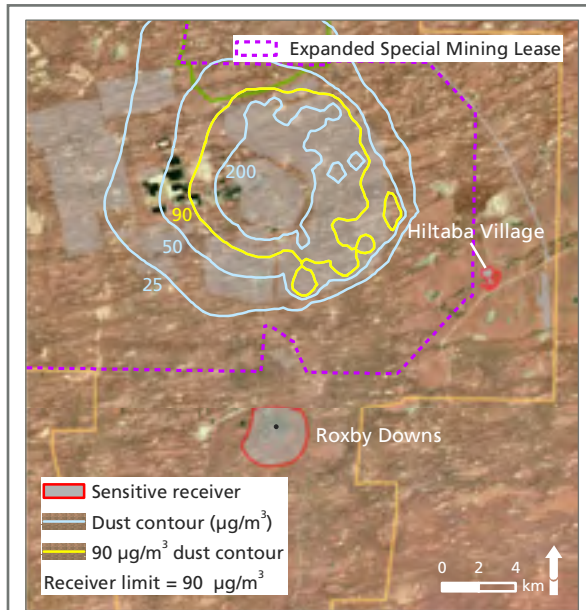
CONTENTS

G1 Air quality ground-level concentration contours



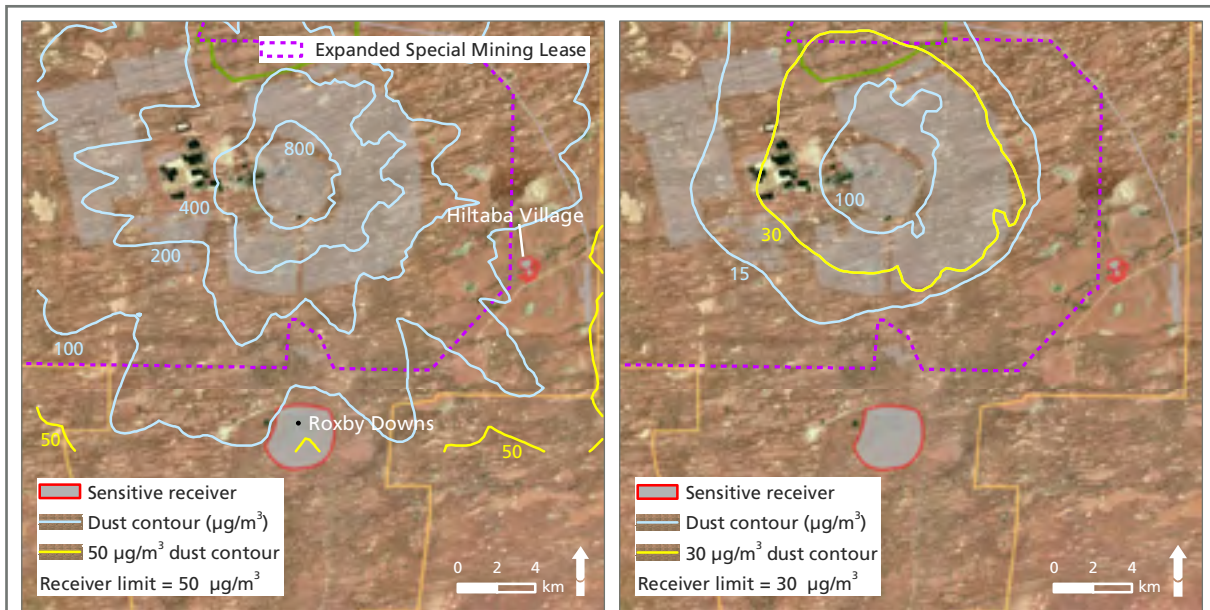
APPENDIX G1

Air quality ground-level concentration contours



Annual average

Figure G1.1 Predicted total suspended particulate ground-level concentrations ($\mu\text{g}/\text{m}^3$)



Maximum 24-hour average

Annual average

Figure G1.2 Predicted PM_{10} ground-level concentrations for the expanded operation ($\mu\text{g}/\text{m}^3$)

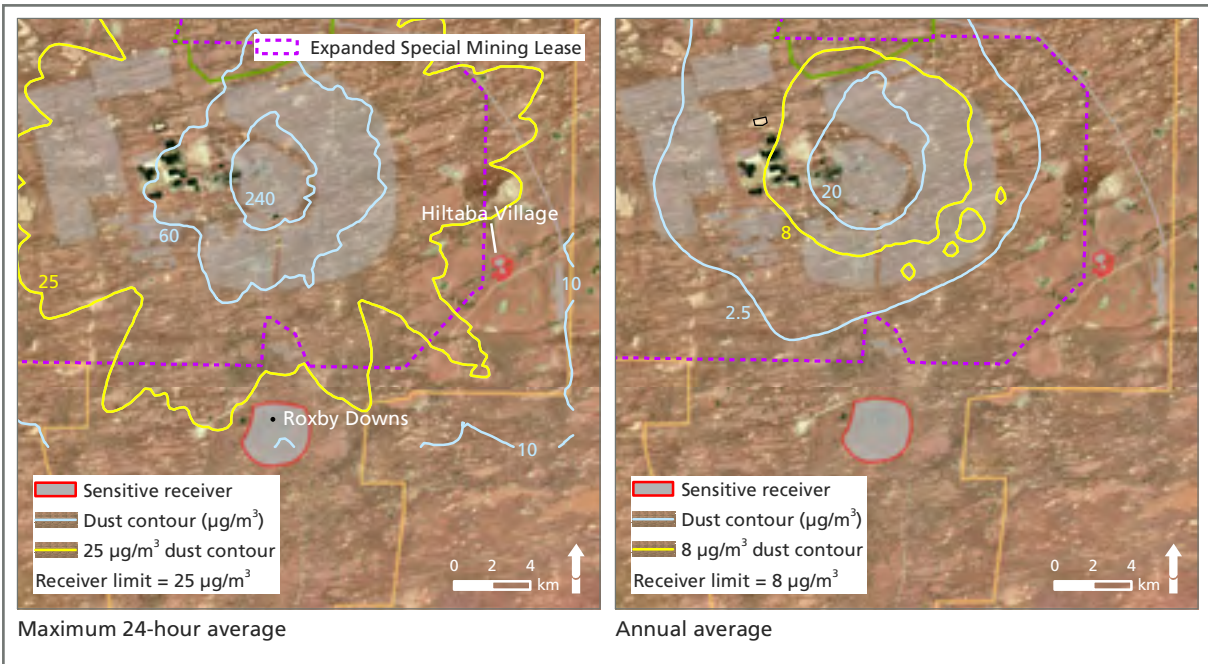


Figure G1.3 Predicted $\text{PM}_{2.5}$ ground-level concentrations ($\mu\text{g}/\text{m}^3$)

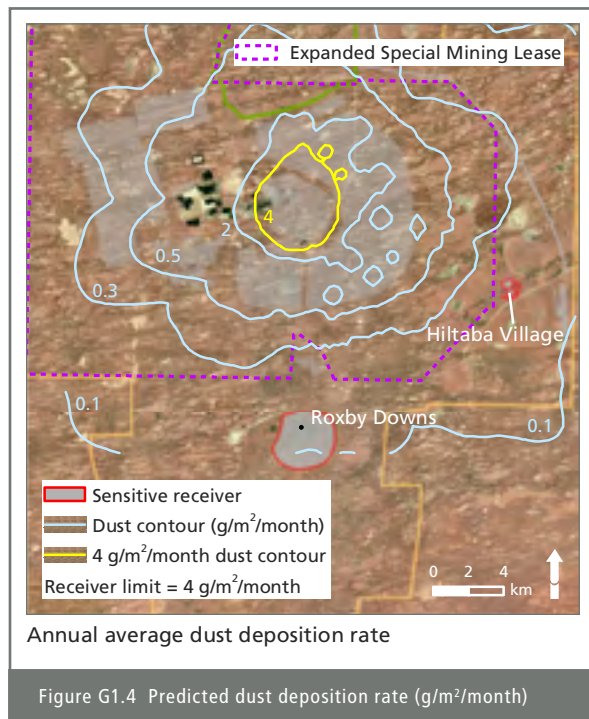
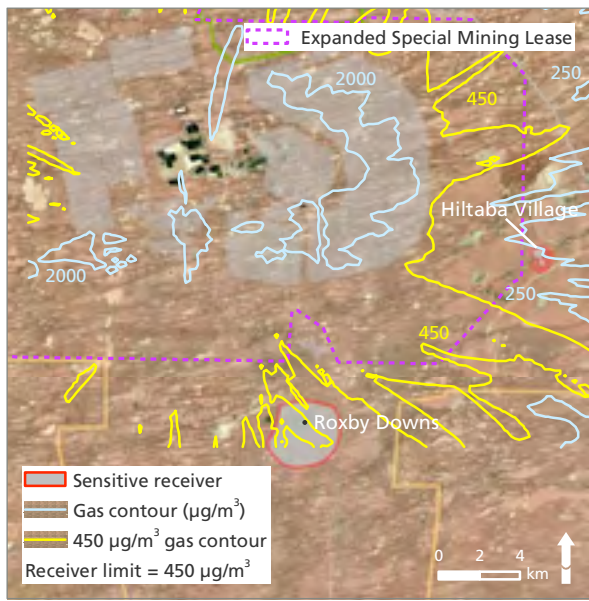
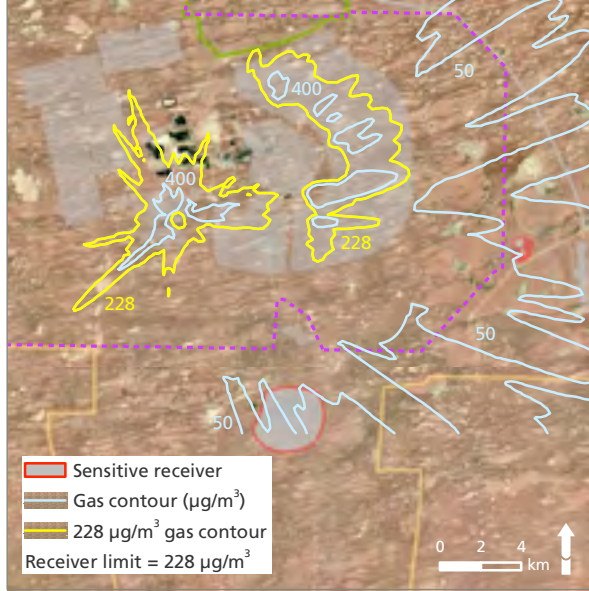


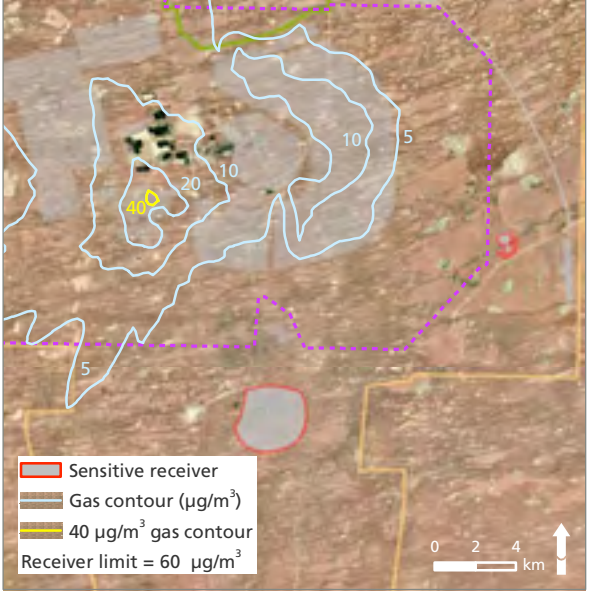
Figure G1.4 Predicted dust deposition rate ($\text{g}/\text{m}^2/\text{month}$)



Maximum 1-hour average



Maximum 24-hour average



Annual average

Figure G1.5 Predicted sulphur dioxide ground-level concentrations ($\mu\text{g}/\text{m}^3$)

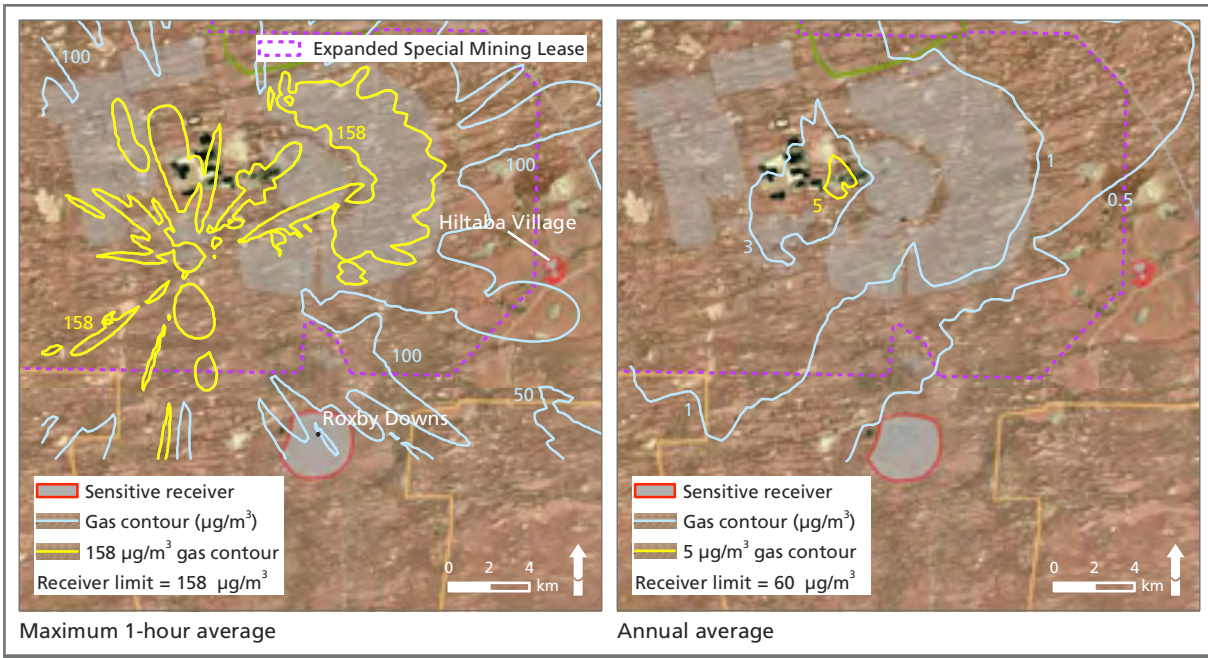


Figure G1.6 Predicted nitrogen dioxide equivalent ground-level concentrations ($\mu\text{g}/\text{m}^3$)

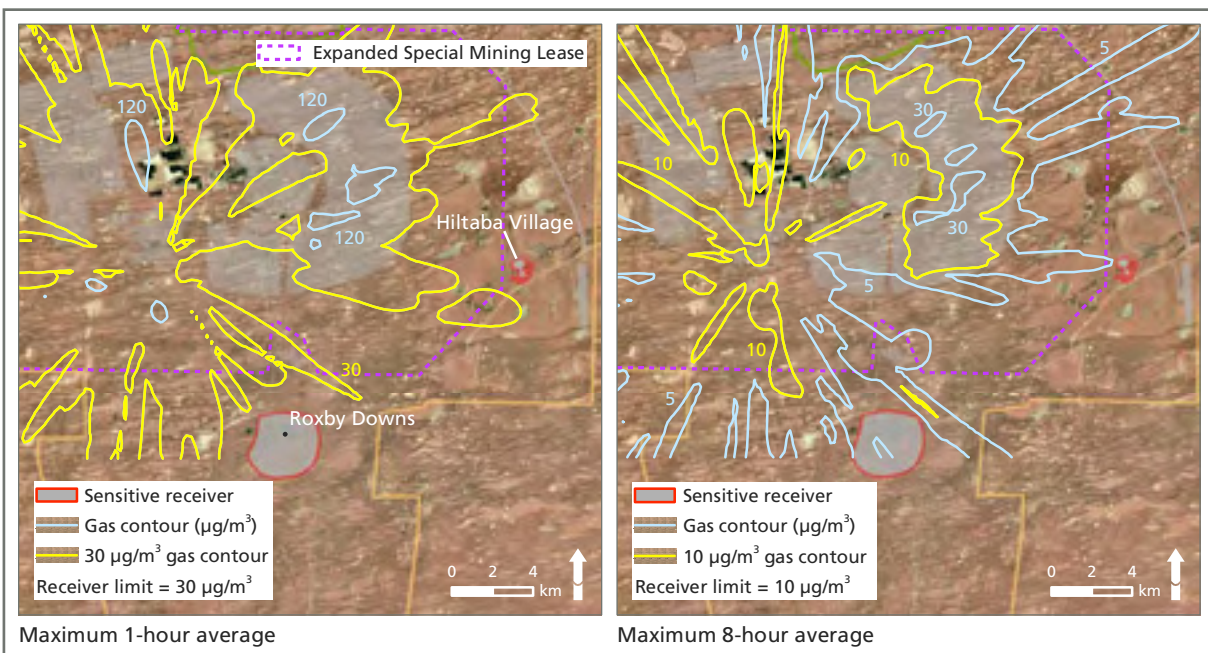
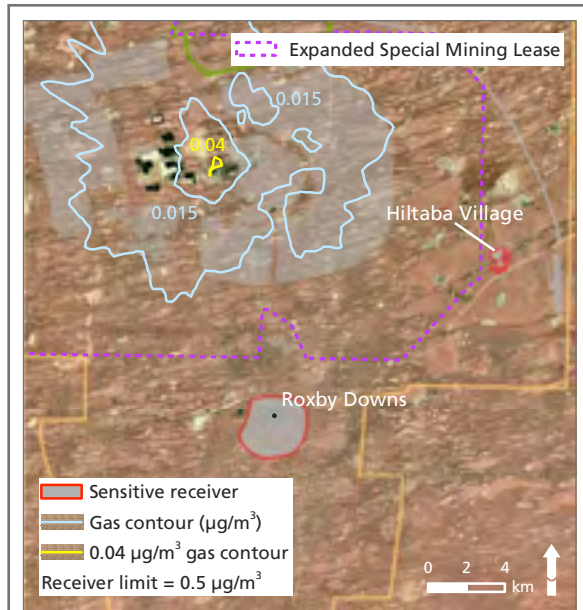
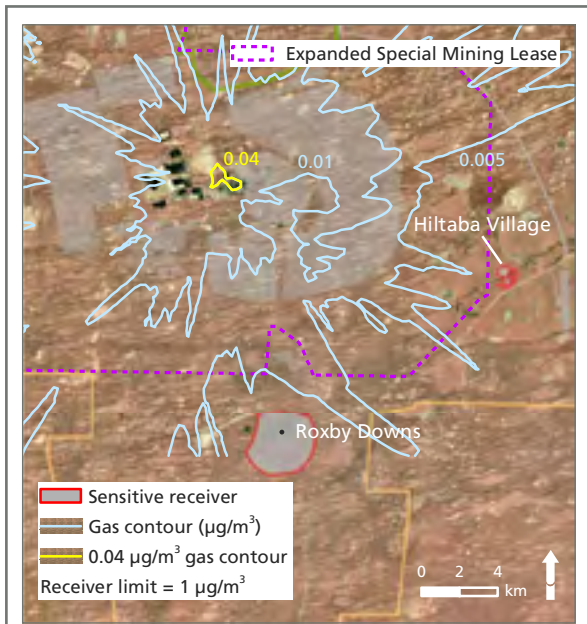


Figure G1.7 Predicted carbon monoxide ground-level concentrations ($\mu\text{g}/\text{m}^3$)



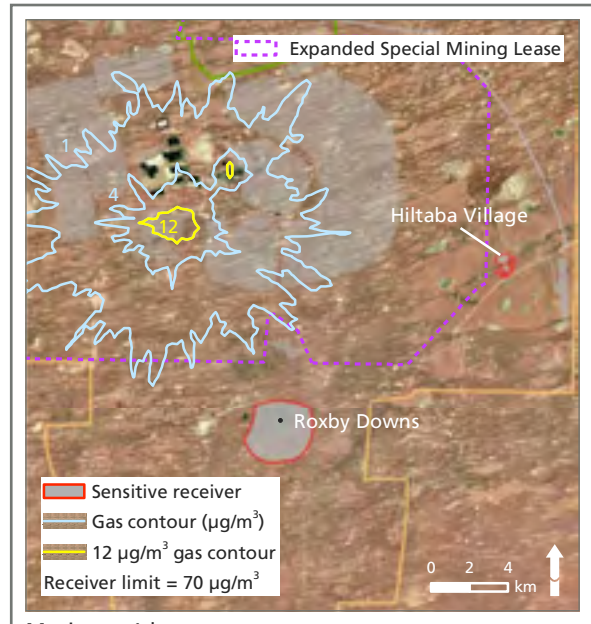
Annual average

Figure G1.8 Predicted lead ground-level concentrations ($\mu\text{g}/\text{m}^3$)



Maximum 24-hour average

Figure G1.9 Predicted flouride (as hydrogen flouride) ground-level concentrations ($\mu\text{g}/\text{m}^3$)



Maximum 1-hour average

Figure G1.10 Predicted odour (as carbon disulphide) ground-level concentrations ($\mu\text{g}/\text{m}^3$)