

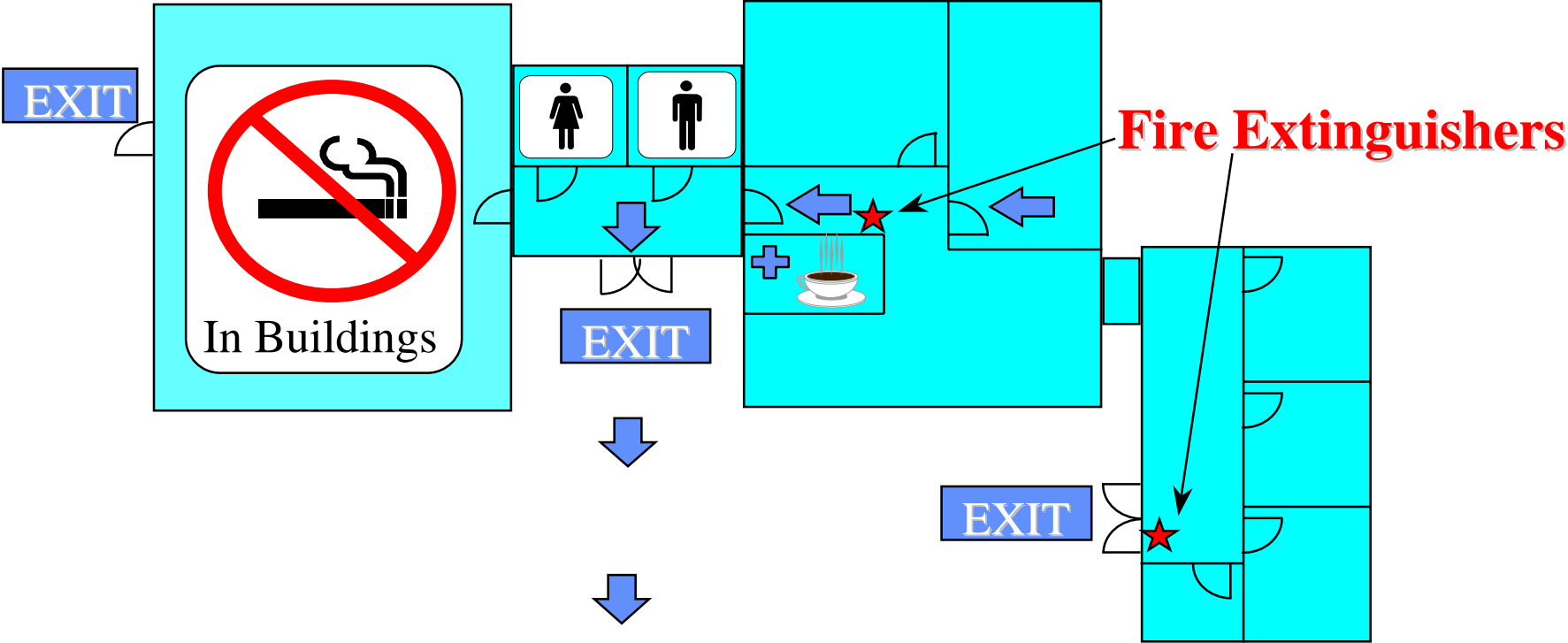
Welcome to the Yandi Operations

Greg Carroll
Manager Yandi

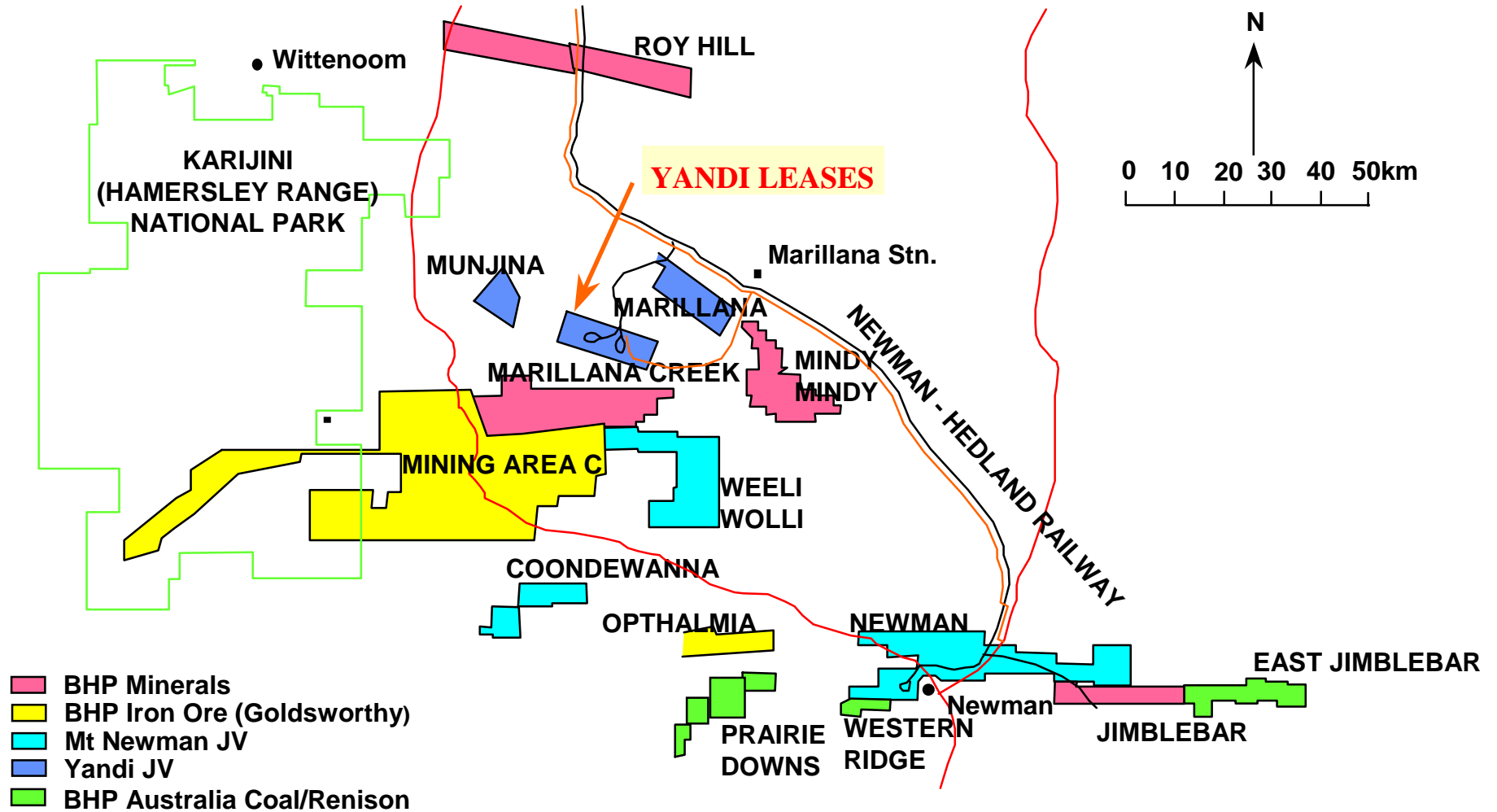
Visitor Induction

- **Safety Helmets and Glasses will be provided. These must be used during the tour at all times when outside the vehicle.**
- **Remain with your Appointed Person at all times.**
- **Keep well clear of machinery and plant.**
- **No Smoking in Buildings and Vehicles.**
- **In the event of an emergency evacuation, proceed to Muster Area.**

Emergency Muster Area



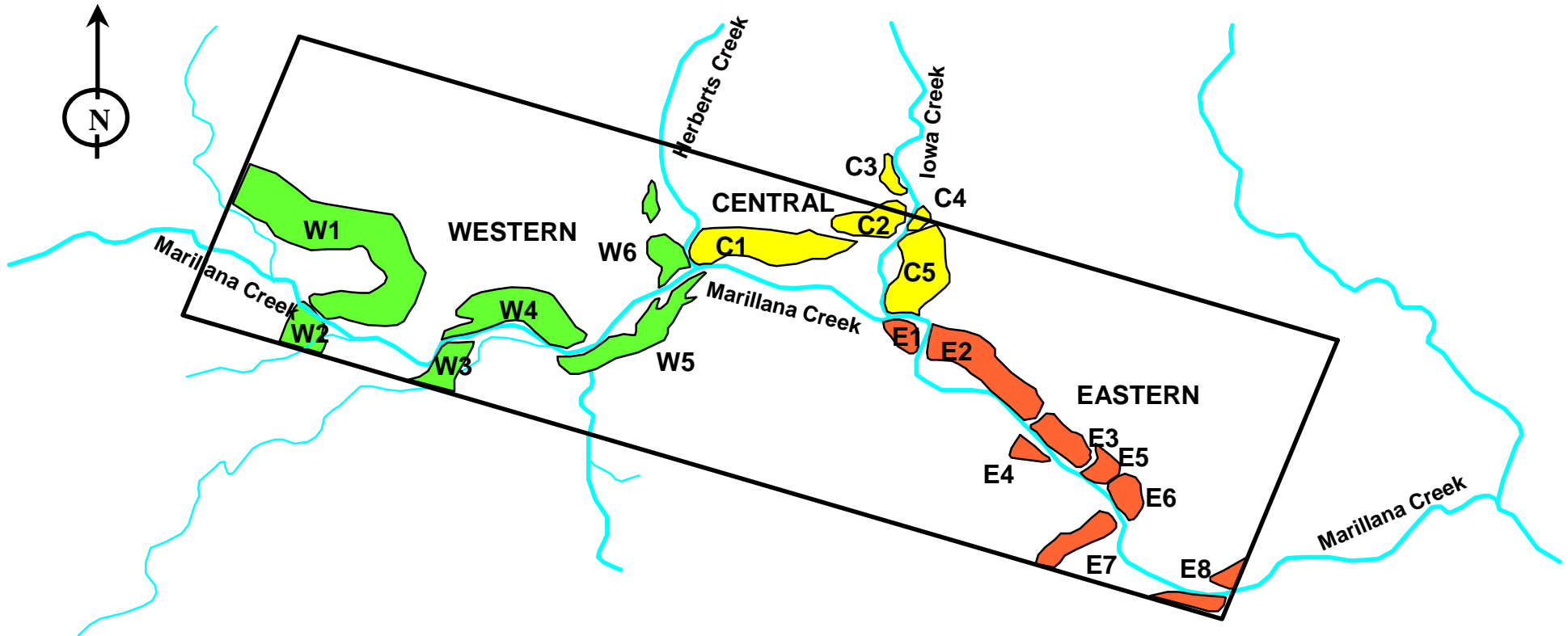
SE Pilbara Iron Ore Tenements



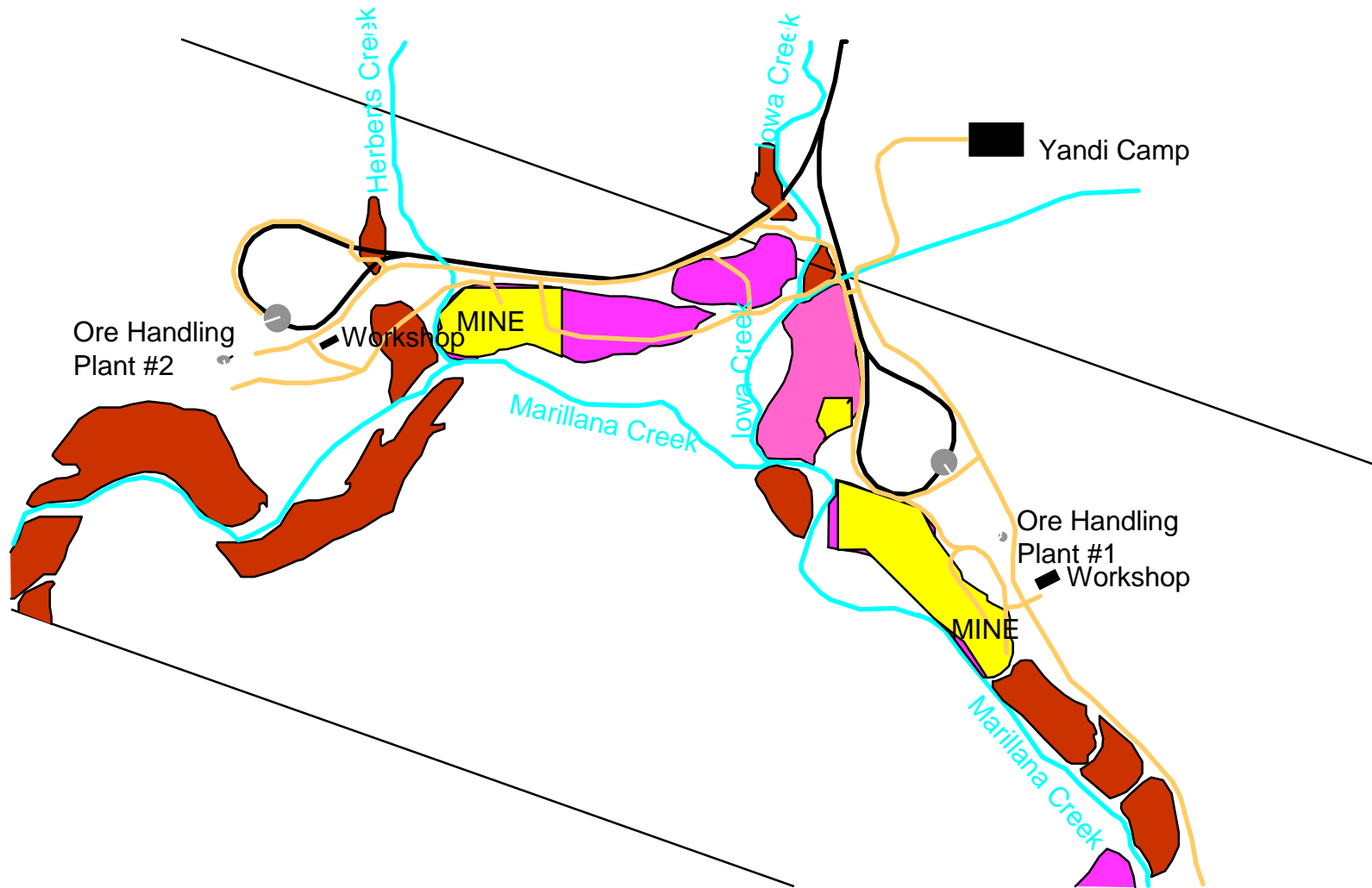
History

- 1963 BHP Minerals Ltd obtained Exploration Tenement
- 1971 700 Mt of resources inferred
- 1981 1815 Mt of resources inferred
- 1986 Infill drilling of Eastern 2/ Central 5 Mesa Areas 310 Mt measured resources
- 1987 200,000 t bulk sample
- 1990 110,000 t bulk sample
- 1991 Sell down of 15% by BHP Minerals to Minor Partners, Site Works commenced, Mining Commenced First ore December
- 1992 First Production railing and First vessel “Yamato” to KSC
- 1996 First Production from Central1 Mesa and new plant at Central
- 1999 100 Mt from Yandi, Development of Yandi Lump
- 2000 100 Mt from Eastern Deposit and OHP 1, Central 5 development begins

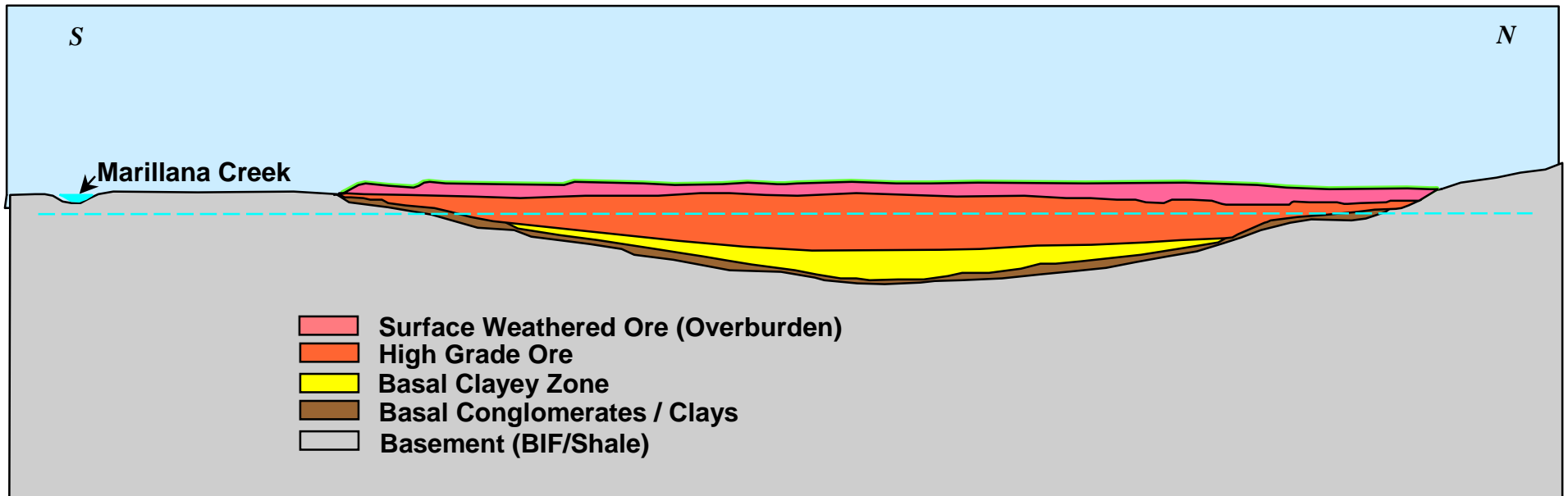
Marillana Creek Lease



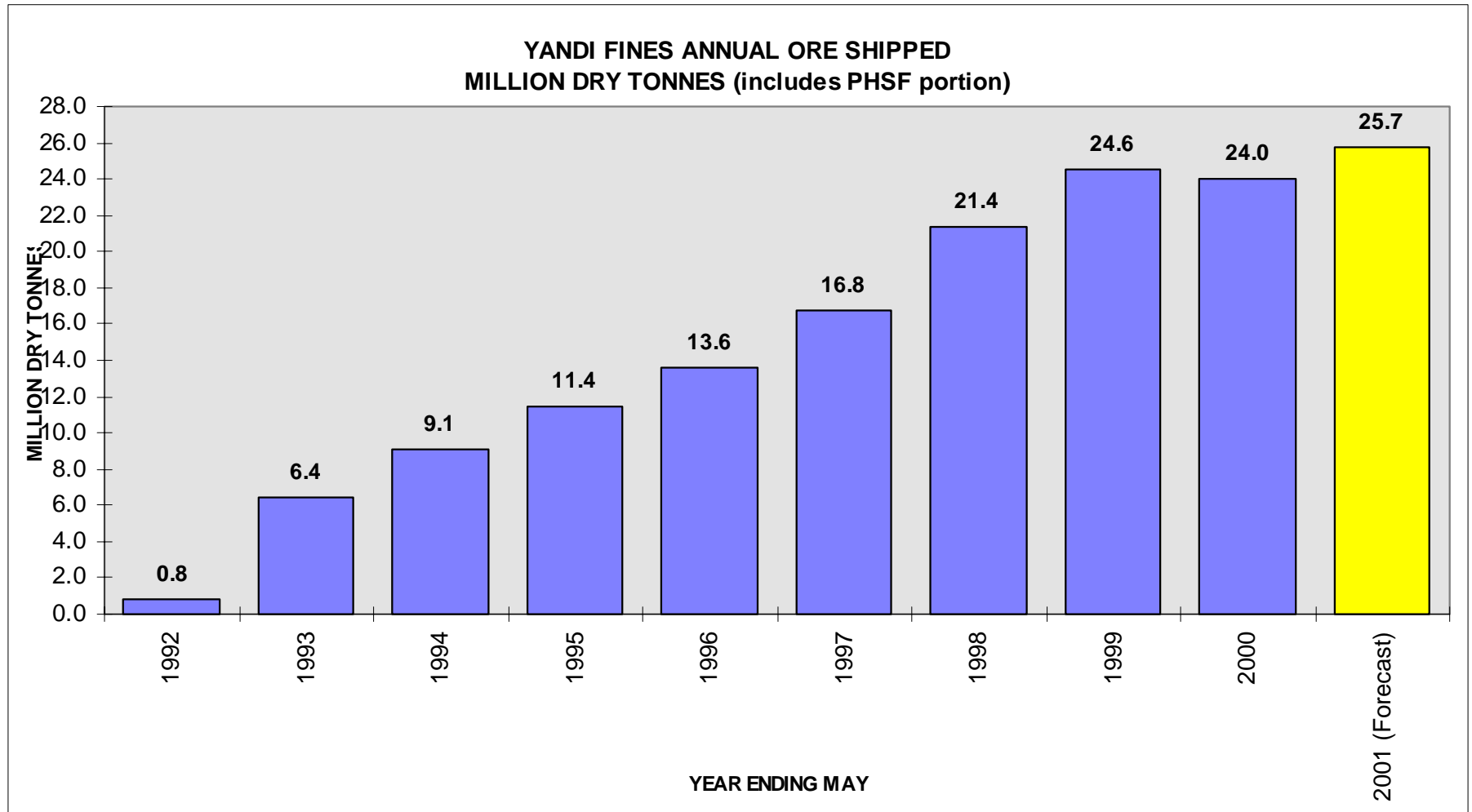
Yandi Infrastructure



Typical Cross Section

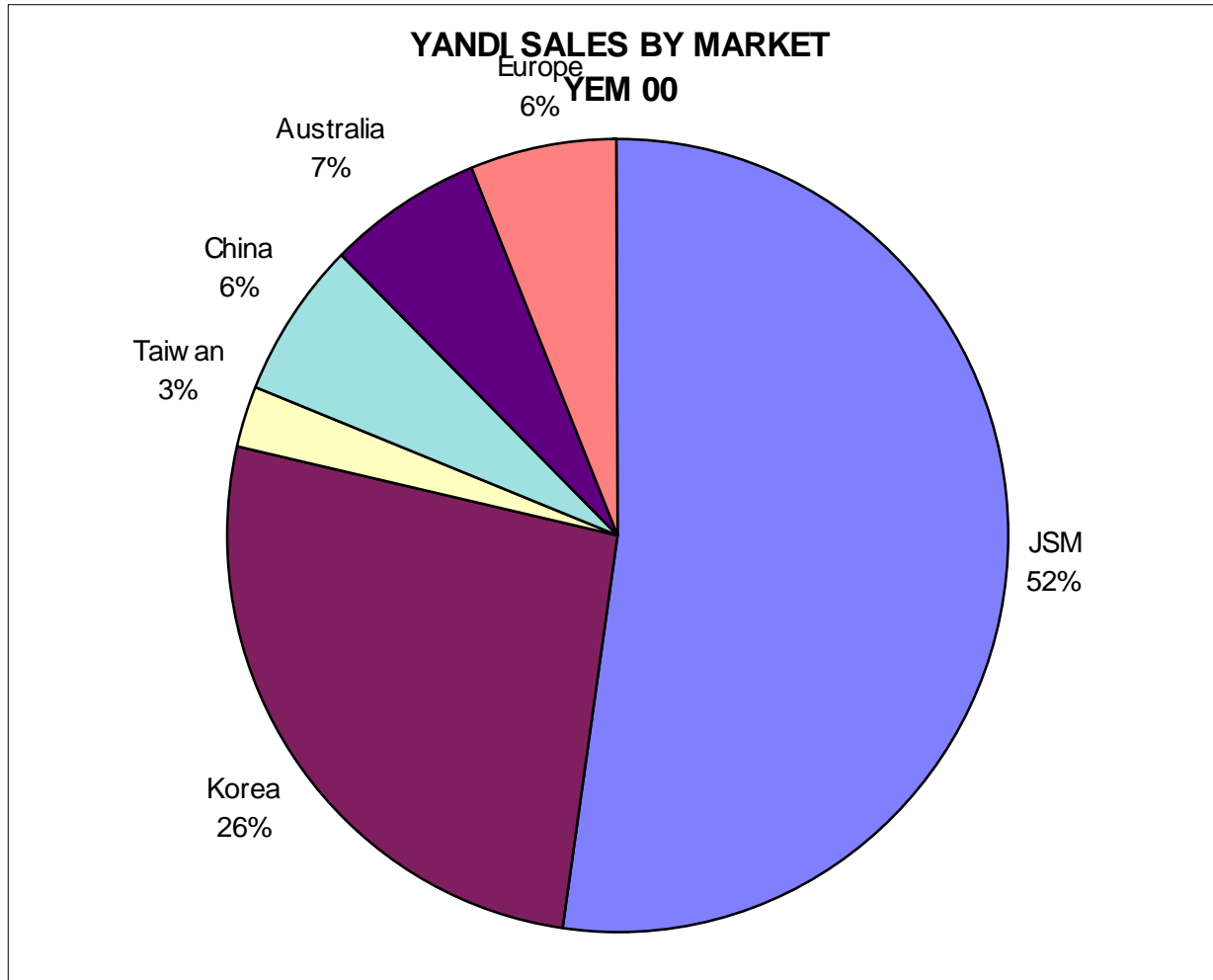


Yandi Shipping

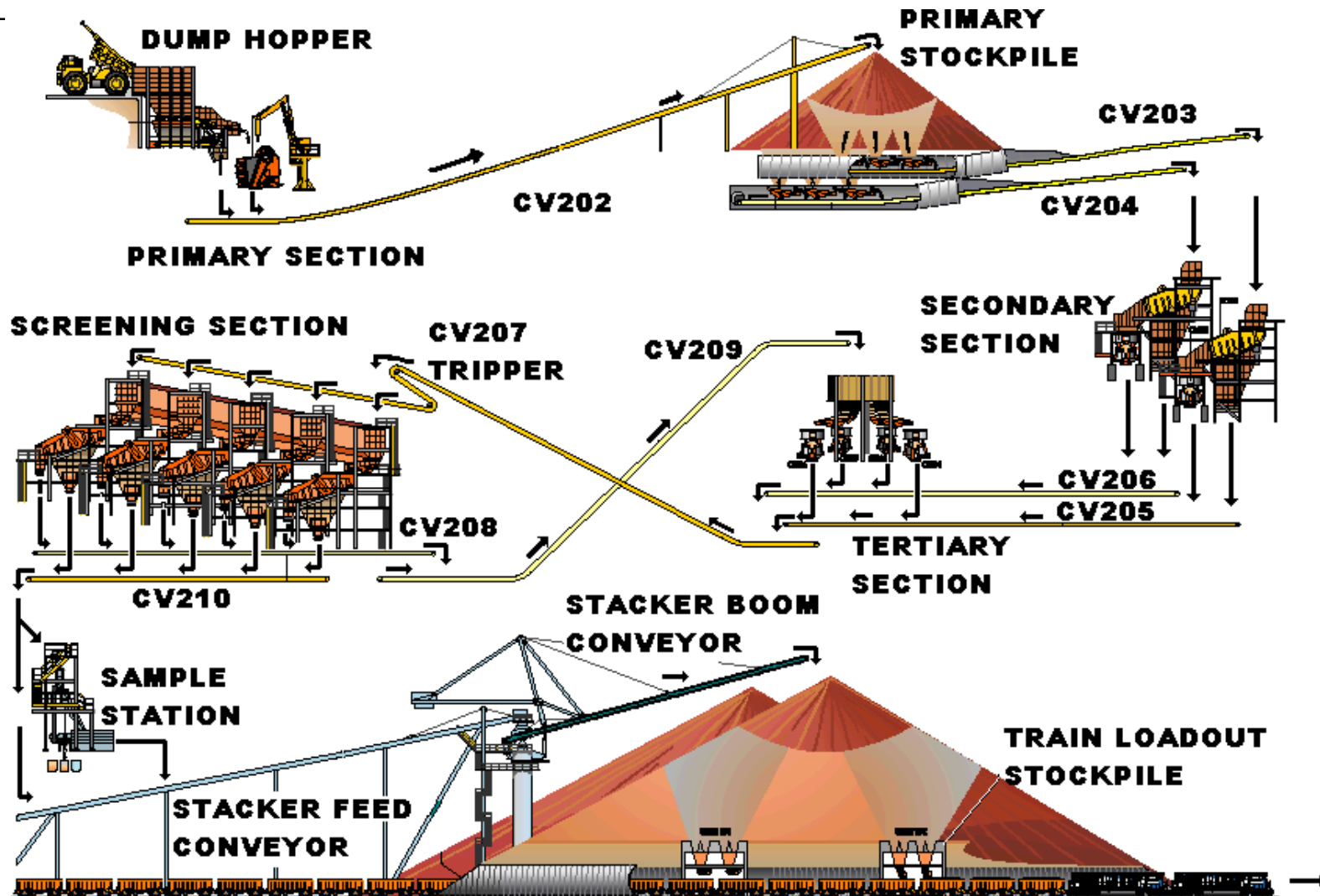


Includes Yandi component of Port Hedland Sinter Fines

Markets



Plant Layout



Yandi Contract

- **Contract Mining Operation**
- **Henry Walker Eltin (HWE) principal contractor**
- **HWE won contract in 1991, Contract recently extended to June 2004**
- **Contract responsible for Drill and Blast, Load and Haul, Ore Processing, Loading Trains, All Site Maintenance, Site Catering and Camp Administration**
- **BHPIO responsible for planning (day-to-day to Life of Project), Quality and Licence Requirements**
- **Manning Levels Contractors 150 BHP 8**
- **Front End Loader and Truck Mining for Flexibility**